

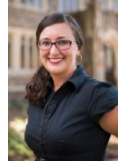
# Advising Faculty Members

Click on faculty names or use the QR code at the bottom of the page to learn more about them. Note that some faculty members may already have a full load of advising students, so please select at least three as possible options.



**STEVE ASHER**

Peer relations, friendship, social competence, loneliness, social cognition.



**SARAH GAITHER**

Biracial and social identities, interracial interactions, racial categorizations.



**ROBERTO CABEZA**

Brain imaging and stimulation of memory in young and older adults.

Unavailable



**JENNIFER GROH**

Perception, vision, hearing, neuroscience, space, brain stimulation.

Unavailable



**AVSHALOM CASPI\***

Development, epidemiology, genetics, health inequalities, personality.

Unavailable



**BRIDGETTE HARD**

Psychology of teaching and learning, educational interventions.

Unavailable



**MAUREEN CRAIG**

Intergroup relations, diversity, prejudice, solidarity, collective action.



**AHMAD HARIRI**

Neuroscience, genetics, psychopathology risk, individual differences.



**RUTH DAY**

Cognitive science, medical cognition, cognition and law, memory for movement.



**RICK HOYLE**

Self-regulation, personality, adolescent problem behavior, research methods.



**TOBIAS EGNER**

Cognitive control, predictive coding, neuroimaging, neurostimulation, attention.

Unavailable



**SCOTT HUETTEL**

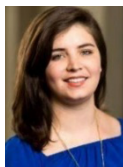
Decision making, behavioral economics, social cognition, executive function, fMRI.





**TAMAR KUSHNIR**

Children, social choices  
moral developments



**CRISTINA SALVADOR**

Influence of culture at  
multiple levels (e.g., brain,  
language, data).



**KEVIN LABAR**

Emotion, memory, fear,  
associative learning, brain  
imaging, psychophysiology.

Unavailable



**GREGORY SAMANEZ-LARKIN**

Individual/age influence on  
decision making across the  
life span.



**ELIZABETH MARSH**

Memory, learning,  
knowledge, metacognition,  
education.

Unavailable



**JAMES SHAH**

Motivation, goal pursuit,  
social cognition, self-  
regulation.



**TERRIE MOFFITT**

Aging, developmental  
longitudinal cohorts,  
neuropsychology.

Unavailable



**TIMOTHY STRAUMAN**

Self-regulation, depression,  
translational research.



**TOBIAS OVERATH**

Perception of sound  
(including speech & music) in  
the human brain.



**MICHAEL TOMASELLO**

Children, great apes, social  
cognition, communication,  
cooperation, social learning.

Unavailable



**EVE PUFFER**

Global/child mental health,  
family therapy, community-  
based interventions.

Unavailable



**ANGELA VIETH**

Self-regulation, personality,  
depression.



**DAVID RUBIN**

Autobiographical memory,  
PTSD, oral traditions, neural  
basis of memory.



**MAKEBA WILBOURN**

Development, gesture, early  
word learning, socio-cultural  
factors, cognition/ language.